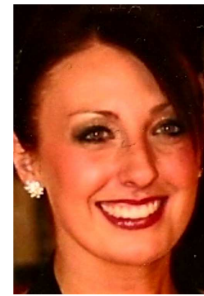


# Use Somebody

Choreographed by Nicola Lafferty  
32 Count, 2 Wall, Intermediate/Advanced level line dance  
Music: Use Somebody by Pixie Lott  
Intro: 16 Count Intro



Notes: There is a restart after 16 counts on Wall 3.  
Dance up until the diagonal walks and begin the dance again

## 1-8 Sways, Weave into Sweep, Behind, ¼, ½ Pivot, 2 Walks

- 1,2 Sway body to Right, sway body to Left
- &3 Sway body to Right, sway body to Left as you take a big step to Left with LF
- 4& Cross RF over LF, Step LF to Left side
- 5 Step RF behind LF as you sweep LF from front to back
- 6& Close LF behind RF, make ¼ Turn Right as you step RF forward
- 7& Step LF fwd, Pivot ½ turn over R shoulder putting weight to RF
- 8& Step LF fwd, Step RF fwd (facing 9.00)

## 9-16 ¼ Turn to Basic, Weave, Basic, ½ Turn, Walks to Diagonal

- 1,2& Making ¼ Turn R to face 12.00, Step LF a big step to L side, close RF to LF, Step LF across RF
- 3& Step RF to R side, Cross LF behind RF
- 4& Step RF to R side, Cross LF in front of RF
- 5,6& Step RF a big step to R side, close LF to RF, Step RF across LF
- 7 Make ½ to Right as you step onto LF
- 8& Facing R diagonal (7.30) Walk fwd RF, Walk fwd LF

\*Restart will occur here

## 17-24 Step Fwd, Hold, Runs Back, ½ Turn, Cross Rock, Side, Press

- 1,2 Still facing R diagonal (7.30), Step RF fwd, Hold
- 3,4& Walk back LF, RF, LF
- 5 Making 3/8 turn (to face 12.00), Step RF to R side
- 6& Cross Rock LF over RF, recover weight to RF
- 7 Step LF a big step to L side
- 8 Press ball of RF into R diagonal (11.30)

## 25-32 Ronde with ¼ Turn, Sweeps travelling back, ½ Turn, Turn, Step Touch

- 1 Making 3/8 turn to R (to face 9.00), Ronde R leg
- 2 Step back onto RF as you sweep LF from front to back
- 3 Step back onto LF as you sweep RF from front to back
- 4&5 Rock RF back, recover weight to LF, make ½ Turn L as you step back on RF
- 6& Make ½ Turn L stepping fwd on LF, Make ½ Turn L stepping back on RF
- 7 Make ¼ Turn L as you step LF a large step to L side
- 8 Contract centre as you touch RF next to LF